

## Knight Frank/Markit House Price Sentiment Index (HPSI) – SEPTEMBER 2012

### September bounce in house price sentiment

#### Key headlines for September

- UK households perceive that the value of their home declined again in September, but at the slowest rate since July 2010
- The outlook for house prices improved, with households expecting the biggest rise in prices over the next 12 months since May
- Households in seven of the 11 regions expect prices to rise in the coming year

#### Change in current house prices

Knight Frank/Markit's House Price Sentiment Index (HPSI) signals that average house prices fell again in September, for the 27<sup>th</sup> consecutive month. But the pace of decline was perceived to have eased markedly. Nearly 10% of households said the price of their home had risen, while 15% said that their property value had declined. This resulted in a HPSI reading of 46.8, up from 44.5 in August and the highest reading since July 2010.

**Any figure under 50 indicates that prices are falling, and the lower the figure, the steeper the decline. Any figure over 50 indicates that prices are rising.**

The survey of 1,500 households across the UK showed that households in London (53.4) felt the value of their home rose over the past month, continuing the trend set back in March. There was also a turnaround in house price performance in the East of England (50.3) with households reporting the first price rises since June 2010. Households in all the other nine

regions reported house price falls, with Scotland (40.0) seeing the deepest declines.

#### A lead indicator

**Since the inception of the HPSI, the index has been a clear lead indicator for house price trends. Figure 3 shows that the index moves ahead of mainstream house price indices, confirming the advantage of an opinion-based survey which provides a current view on household sentiment, rather than historic evidence from transactions or mortgage market evidence.**

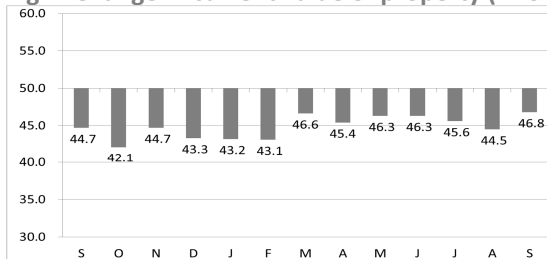
#### Outlook for house prices

The future HPSI (figure 2), which measures what households think will happen to the value of their property over the next year, climbed in September. Around 28% of households anticipate a rise in the value of their home over the next 12 months, compared with 21% expecting a decline. The resulting index reading is 53.2, up from August's reading of 51.8 and marking the highest reading since May this year.

#### Regional outlook

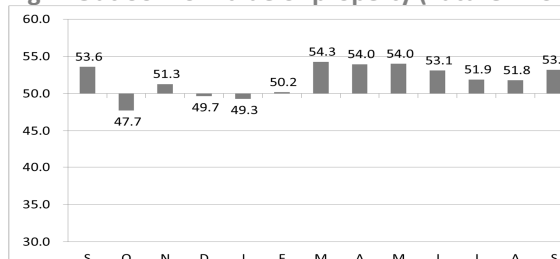
Expectations for house price rises were recorded in seven of the 11 regions in August. But 'north/south' divide became blurred amid a turnaround in expectations among households in the North East (54.6), West Midlands (52.2) and the East Midlands (51.0). Households in these regions now expect prices to rise over the next year whereas in August they had expected prices to fall. In contrast, households in Yorkshire and the Humber (46.4) and Scotland (47.1) now expect

**Fig 1: Change in current value of property (HPSI)**



Source: Knight Frank/Markit

**Fig 2: Outlook for value of property (Future HPSI)**



Source: Knight Frank/Markit

**NB: A score of 50 equates to no change, above or below representing growth or decline respectively.**

price falls, whereas they had predicted prices would rise in August.

London continues to lead the way, with households in the Capital expecting the biggest price rises over the next year with a reading of 63.1, up from 61.3 in August.

#### Household variations

Households across all tenures, from outright homeowners to those living rent-free, are upbeat about the prospect for price rises over the next year. This is the first time all households have been united in their expectations for prices since May this year, and it is only the fourth month this has happened over the last two years.

Those living rent-free (56.8) are the most optimistic about prices, while those renting from social landlords (51.2) expect the most modest rises in prices, followed by those who own their home outright (51.3) with no mortgage.

The top earners continue to be the most optimistic about house prices. Those earning more than £58,000 a year have an average future HPSI reading of 56.6, although this is down from 57.5 in August. Those earning less than £15,000 a year were next in line, with a reading of 52.8, up from 48.5 in August. Those earning between £15,000 and £23,000 expect the smallest increase, with a reading of 50.6.

**Gráinne Gilmore, head of UK residential research at Knight Frank, said:**

“The ‘back-to-school’ gloom is certainly not affecting the housing market. Indeed the uplift in expectations fits with the traditional rise in activity after the school holidays.”

“This bounce in sentiment also coincides with some brighter news on the economy, with serious questions being raised about whether the country is actually in recession. Better than expected employment data, as well as encouraging signs from the services and manufacturing sectors, are also helping to bolster economic confidence.

“But the house price performance is still localised, as the figures show, reflecting how the challenges within the housing market are affecting different regions. A lack of mortgage lending continues to act as a dampener on activity in many areas, especially among first time buyers.”

**Chris Williamson, chief economist at Markit, said:**

“September saw some confidence continue to return to the UK housing market, but expectations of where house prices will be in 12 months’ time remain well below levels seen earlier in the recovery and suggest little overall change in house prices.

“Confidence continues to be hit by poor availability of mortgage finance, high unemployment, low pay growth and uncertainty about the outlook. However growing evidence of a rebound in the domestic economy since the second quarter and recent better news on the labour market have all helped to buoy sentiment in September, which could perhaps lead to further gains in the HPSI in coming months if the news flow continues to improve.”

**Ends**

## Knight Frank/Markit House Price Sentiment Index (HPSI) – Data Summary

Fig 3: HPSI vs house price indices (12 mnth change)

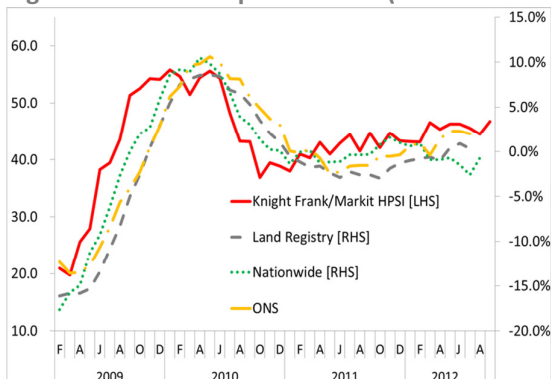
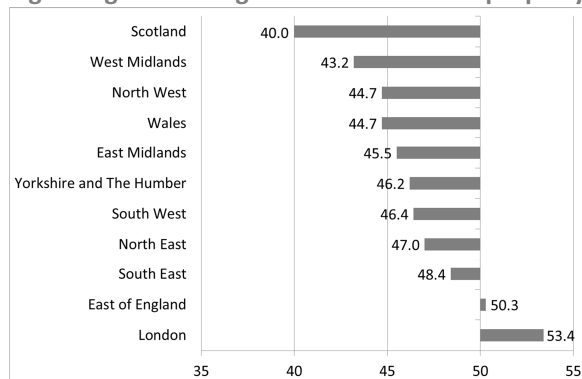


Fig 4: Regional change in current value of property



Current: Compared to one month ago, how do you think the value of the property/dwelling in which you live has changed?

All UK		North East	North West	Yorkshire and The Humber	East Midlands	West Midlands	East of England	London	South East	South West	Wales	Scotland
Sep-11	44.7	41.3	43.1	41.3	38.8	43.1	47.5	49.6	46.2	42.5	45.6	46.8
Oct-11	42.1	40.2	40.3	38.6	41.5	36.8	43.8	46.4	45.2	43.2	37.6	43.1
Nov-11	44.7	39.9	41.7	41.7	47.0	42.2	46.0	48.7	46.3	45.3	44.6	44.3
Dec-11	43.3	38.5	40.8	40.0	39.4	43.3	46.0	49.8	45.5	43.0	38.8	42.0
Jan-12	43.2	38.6	43.2	40.6	40.4	42.1	40.9	47.7	45.8	43.6	40.2	44.5
Feb-12	43.1	45.2	43.5	38.2	40.6	42.1	41.1	49.5	44.2	44.3	35.7	42.4
Mar-12	46.6	43.1	41.4	44.9	41.4	45.8	49.6	55.1	48.4	47.9	43.0	43.8
Apr-12	45.4	39.1	43.3	41.0	41.4	45.8	42.1	53.6	48.8	47.3	39.2	45.6
May-12	46.3	44.5	41.0	44.0	46.8	42.5	48.9	50.9	49.2	47.8	45.3	44.3
Jun-12	46.3	41.9	47.4	46.9	47.7	44.3	47.2	50.7	44.3	45.0	40.4	47.4
Jul-12	45.6	42.0	44.8	43.9	41.6	46.6	48.4	51.0	46.1	44.1	43.0	43.5
Aug-12	44.5	44.2	39.5	41.9	42.8	42.5	46.9	51.9	45.0	43.9	39.8	45.8
Sep-12	46.8	47.0	44.7	46.2	45.5	43.2	50.3	53.4	48.4	46.4	44.7	40.0

Future: How do you think the value of the property/dwelling in which you live will have changed 12 months from now?

All UK		North East	North West	Yorkshire and The Humber	East Midlands	West Midlands	East of England	London	South East	South West	Wales	Scotland
Sep-11	53.6	51.0	49.4	51.1	47.9	53.5	57.3	57.4	59.0	52.2	54.2	50.4
Oct-11	47.7	39.8	49.0	42.5	45.0	46.5	52.1	52.7	53.3	42.1	44.3	44.9
Nov-11	51.3	44.5	48.9	38.6	51.1	43.8	52.4	62.0	56.1	49.6	45.9	57.3
Dec-11	49.7	40.9	48.8	49.0	53.4	50.4	50.7	58.7	48.0	44.9	42.9	47.9
Jan-12	49.3	41.7	46.0	46.0	45.3	47.6	45.7	57.8	54.3	48.8	42.6	52.9
Feb-12	50.2	50.4	48.5	43.7	49.0	52.2	50.8	59.9	50.4	50.2	45.4	44.0
Mar-12	54.3	43.6	46.2	48.7	46.7	47.5	56.2	65.2	60.2	58.1	55.1	56.3
Apr-12	54.0	45.1	52.6	53.6	55.7	51.2	51.0	62.2	56.4	53.4	48.0	52.3
May-12	54.0	49.1	47.0	51.3	56.1	47.2	61.0	62.8	57.1	48.6	53.8	52.1
Jun-12	53.1	45.5	47.7	52.0	52.6	52.6	55.4	60.2	55.3	46.7	54.3	54.8
Jul-12	51.9	45.5	49.7	37.9	48.5	52.3	53.9	63.5	53.6	49.1	56.2	51.8
Aug-12	51.8	46.2	44.1	52.7	48.9	47.3	53.1	61.3	53.4	52.2	49.4	52.8
Sep-12	53.2	54.6	48.5	46.4	51.0	52.2	56.2	63.1	55.7	55.0	47.9	47.1

---

For further information, please contact

**Knight Frank**

Rosie Cade, PR Manager  
[rosie.cade@knightfrank.com](mailto:rosie.cade@knightfrank.com)  
020 7861 1068

**Markit**

Caroline Lumley, Director, Corporate Communications  
[Caroline.Lumley@markit.com](mailto:Caroline.Lumley@markit.com)  
020 7260 2047

Gráinne Gilmore, Head of UK Residential Research  
[grainne.gilmore@knightfrank.com](mailto:grainne.gilmore@knightfrank.com)  
020 7861 5102  
07785 527 145

Chris Williamson, Chief Economist  
[chris.williamson@markit.com](mailto:chris.williamson@markit.com)  
0779 5555061

**Notes to editors**

*About the HPSI*

The Knight Frank/Markit House Price Sentiment Index (HPSI) survey was first conducted in February 2009 and is compiled each month by Markit.

The survey is based on monthly responses from approximately 1,500 individuals in Great Britain, with data collected by Ipsos MORI from its panel of respondents aged 18-64. The survey sample is structured according to gender, region and age to ensure the survey results accurately reflect the true composition of the population. Results are also weighted to further improve representativeness.

Prior to September 2010, the Household Finance Index was jointly compiled by YouGov and Markit based on monthly responses from over 2,000 UK households, with data collected online by YouGov plc from its representative panel of respondents aged 18 and above. The panel was structured according to income, region and age to ensure the survey results accurately reflected the true composition of the UK population. Results were also weighted to further improve representativeness.

*Index numbers*

Index numbers are calculated from the percentages of respondents reporting an improvement, no change or decline. These indices vary between 0 and 100 with readings of exactly 50.0 signalling no change on the previous month. Readings above 50.0 signal an increase or improvement; readings below 50.0 signal a decline or deterioration.

*Ipsos MORI technical details (July survey)*

Ipsos MORI interviewed 1500 adults aged 18-64 across Great Britain from its online panel of respondents. Interviews were conducted online between 13<sup>th</sup> – 17<sup>th</sup> September 2012. A representative sample of adults was interviewed with quota controls set by gender, age and region and the resultant survey data weighted to the known GB profile of this audience by gender, age, region and household income. Ipsos MORI was responsible for the fieldwork and data collection only and not responsible for the analysis, reporting or interpretation of the survey results.

*About Knight Frank*

Knight Frank LLP is the leading independent global property consultancy. Headquartered in London, Knight Frank and its New York-based global partner, Newmark Knight Frank, operate from 209 offices, in 47 countries, across six continents. More than 6,840 professionals handle in excess of US\$755 billion (£521 billion) worth of commercial, agricultural and residential real estate annually, advising clients ranging from individual owners and buyers to major developers, investors and corporate tenants. For further information about the Company, please visit [www.knightfrank.com](http://www.knightfrank.com).

---

For the latest news, views and analysis on the world of prime property visit Knight Frank's new website Global Briefing at <http://globalbriefing.knightfrank.com/>. And follow us on twitter @kfglobalbrief and @knightfrank.

*About Markit*

Markit is a leading, global financial information services company with over 2,000 employees. The company provides independent data, valuations and trade processing across all asset classes in order to enhance transparency, reduce risk and improve operational efficiency. Its client base includes the most significant institutional participants in the financial market place. For more information please see [www.markit.com](http://www.markit.com)

The intellectual property rights to the HPSI provided herein is owned by Markit Economics Limited. Any unauthorised use, including but not limited to copying, distributing, transmitting or otherwise of any data appearing is not permitted without Markit's prior consent. Markit shall not have any liability, duty or obligation for or relating to the content or information ("data") contained herein, any errors, inaccuracies, omissions or delays in the data, or for any actions taken in reliance thereon. In no event shall Markit be liable for any special, incidental, or consequential damages, arising out of the use of the data. Markit and the Markit logo are registered trade marks of Markit Group Limited.

