

URBAN WALKABOUT VAUXHALL

Issue #1
June 2016



ABOUT VAUXHALL

Heritage meets contemporary design at Mount Anvil and Fabrica by A2Dominions Keybridge development in London's southwest. Situated in regenerated Vauxhall, the area is seeing rapid transformation as buildings spring up on the banks of the Thames. Surrounded by abundant parks such as the Vauxhall Pleasure Gardens and steeped in 17th century history, Vauxhall is the site of London's most exciting renaissance. Passionate residents and non-profit organisations such as Vauxhall One work collaboratively to improve the area and create new opportunities for both businesses and the community. You can come here for just about anything, from a juicy burger to a negroni cocktail in a vintage brasserie. Delights abound, from fringe theatres to restaurants and galleries housed within impressive Georgian or Victorian mansions. With many of the capital's breathtaking icons just a hop and a skip across the Thames or a short bike ride away, there's never a dull moment here. Well-connected, innovative and exciting, Keybridge is destined to become the standout landmark in the capital's most exciting new neighbourhood.

1 Bonnington Square Café B4



Exuding a warm and friendly atmosphere, this homely venue sits within a community garden. Originally built to serve the local community, it features an elaborate vegetarian and vegan menu, with recipes from chefs all over the world, changing daily.
11 Vauxhall Grove. T: 07552 475535

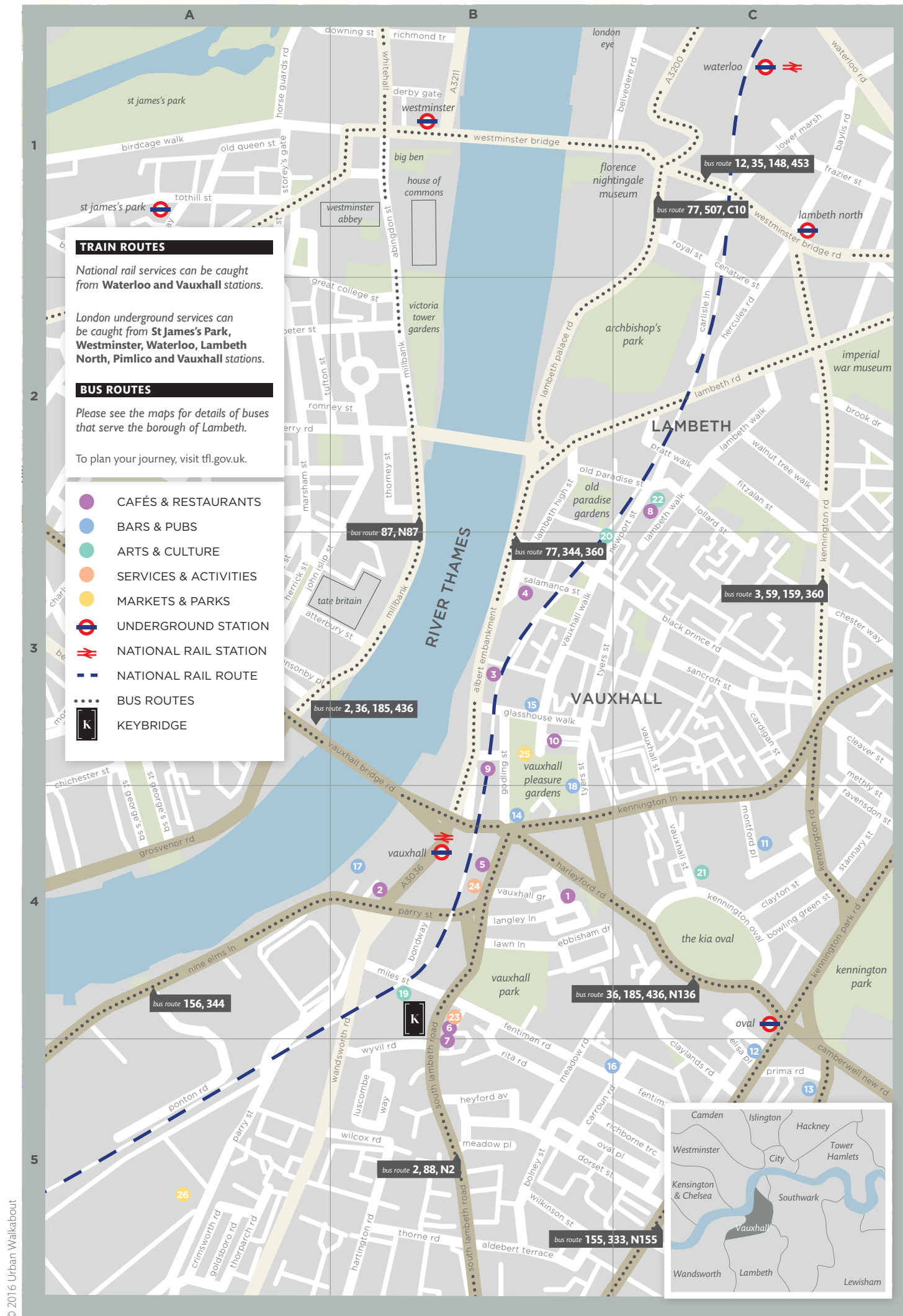
URBANWALKABOUT.COM

Published by Urban Walkabout Pty Ltd © Urban Walkabout 2016
a 120A Devonshire St NSW 2010 Australia
t 612 9698 4115 e info@urbanwalkabout.com
Photography by Andy Donohoe



COVER ARTIST MARINA ESMERALDO

Urban Walkabout is proud to support talented, contemporary illustrators on the cover of our city guide publications. This cover is a commissioned artwork by artist Marina Esmeraldo. See more of her work at marinaesmeraldo.com



CAFES & RESTAURANTS

- Bonnington Square Café B4**
Community garden and vegetarian café
11 Vauxhall Grove, SW8 1TD
T: 07552 475535 bonningtoncafe.co.uk
M to Su 12pm-2pm & 6.30pm-11pm
- Brunswick House B4**
Fine dining, Georgian style
30 Wandsworth Road, SW8 2LG
T: 020 7394 2100
asso.co.uk/venues/brunswick-house/
M to F 9am-5.30pm
Sa 10am-5pm Su 11am-5pm
- Casa Madeira B3**
Ambient and lively Portuguese venue
46A Albert Embankment, SE1 7TL
T: 020 7820 1117 madeiralondon.co.uk
M to F 12pm-11pm
Sa 12pm-12am Su 12pm-10.30pm
- Chino Latino B3**
Spanish and Asian fusion
18 Albert Embankment, SE1 7TJ
T: 020 7769 2500 chinolatino.eu/london
M to F 12pm-2.30pm (Lunch)
M to Sa 6pm-11.30pm & Su 6pm-11pm (Dinner)
- Counter B4**
Vintage and modern brasserie
Arch 50 South Lambeth Road, SW8 1SP
T: 020 3693 9600
counterrestaurants.com
M to Thu 7am-12.30am F 7am-1.30am
Sa 9am-1.30am Su 9am-12.30am

- Royal Vauxhall Tavern B4**
Former Victorian hall and gay club
372 Kennington Lane, SE11 5HY
T: 020 7820 1222 vauxhalltavern.com
M to W 7pm-12am Th 7pm-2am
F 6.30pm-10pm & 3am-5am
Sa 9pm-2am Su 3pm-1am
- The Black Dog B3**
Rustic and spacious pub
112 Vauxhall Walk, SE11 5ER
T: 020 7735 4440
theblackdogvauxhall.com
M to F 8am-11.30pm
Sa 12pm-12am Su 12pm-9.30pm
- The Fentiman Arms c5**
Homely, rustic bar and beer garden
64 Fentiman Road, SW8 1LA
T: 020 7793 9796 fentimanarms.co.uk
M to Thu 11am-12am Fri to Sa 8am-12am Su 12pm to 10.30pm
- The Riverside B4**
Stylish bar on the River Thames
Hamilton House, 5 St George's Wharf, SW8 2LE
T: 020 7735 8129
riversidelondon.com
M to Su 12pm-10.30pm
- Vauxhall City Farm B3**
Spacious Urban Charity Farm
165 Tyers Street, SE11 5HS
T: 020 7582 4204 vauxhallcityfarm.org
Tu to Su 10.30am-4pm

ARTS & CULTURE

- Harar Restaurant B4**
Ethiopian and Thai-inspired deli
49 South Lambeth Road, SW8 1RH
T: 020 7735 8915 hararrestaurant.co.uk
M to Su 8am-12am
- Mumbai Delight B4**
Natural and authentic Indian cuisine
51A South Lambeth Road, SW8 1RH
T: 020 7091 0043 mumbaidelight.co.uk
M to F 12pm-2.30pm and 6pm-11pm
Sa to Su 2pm-10pm
- Pharmacy 2 C2**
Quirky restaurant within a gallery
Newport Street, SE11 6AJ
T: 020 3141 9333
pharmacyrestaurant.com
Tu to Sa 10am-12am Su 10am-6pm
- Pico Bar & Grill B3**
Portuguese grill and tapas
74 Albert Embankment, SE1 7TL
T: 020 7820 1282 madeiralondon.co.uk
M to F 12pm-11pm Sa 12pm-12am
Su 12pm-10.30pm
- Tea House Theatre B3**
Transformative café and theatre
139 Vauxhall Walk SE11 5HL
T: 020 7207 4585 teahousetheatre.co.uk
M to Sa 8am-8pm Su 10am-8pm

SERVICES & ACTIVITIES

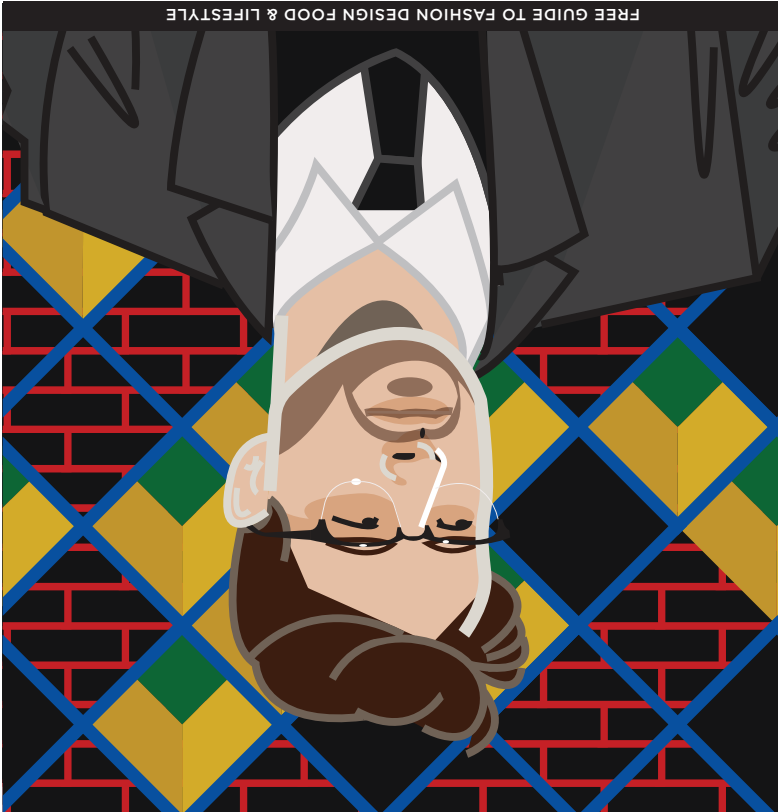
- Above The Stag Theatre B4**
Fringe theatre with a twist
17 Miles Street, SW8 1RZ
abovestag.com
- Beaconsfield Studio C2**
Contemporary art gallery
22 Newport Street, SE11 6AY
T: 020 7582 6465 beaconsfield.ltd.uk
W to Su 11am-5pm
- Gasworks C4**
Contemporary visual art organisation
155 Vauxhall Street, SE11 5RH
T: 020 7587 5202 gasworks.org.uk
W to Su 12pm-6pm
- Newport Street Gallery C2**
Gallery housing Damien Hirst's work
Newport Street, SE11 6AJ
T: 020 3141 9320
newportstreetgallery.com
Tu to Su 10am-6pm

BARS & PUBS

- Beefeater Gin Distillery C4**
Historic, educative gin distillery
20 Montford Place, SE11 5DE
T: 020 7587 0034 beeefeaterdistillery.com
M to Sa 10am-6pm
- The Brown Derby c5**
Old-style saloon bar
336 Kennington Park Road, SE11 4PP
T: 020 7735 5122
thebrownderbypub.wordpress.com
M 4pm-11pm Tu to Th 12pm-12am
F to Sa 12pm-1am Su 12pm-10.30pm
- Cable Café & Bar c5**
Lively 1950s bar and café
8 Brixton Road, SW9 6BU
T: 020 8617 9629
M to Su 8.30am-11pm

MARKETS & PARKS

- Vauxhall Park Pleasure Gardens & Café B3**
Beautiful and historic gardens
Tyers Street, SE11 5HL
vauxhallgardens.com
Café Hours: M to F 8.30am-6pm
Sa to Su 10am-6pm
- New Covent Garden Market A5**
Fresh food and flower market
New Covent Garden Market, SW8 5BH
T: 020 7720 2211
newcoventgardenmarket.com
Flower Market: M to Sa 4am-10am
Fruit & Veg Market: M to Sa 12am-6am



VAUXHALL

URBAN WALKABOUT LONDON
ISSUE #1 JUNE 16

MOVE UP IN THE WORLD

The UK's tallest residential brick building brings Manhattan-style living to Vauxhall. Surrounded by an acre of landscaped green space and fusing together traditional materials with a cutting edge context, all apartments offer a choice of three expertly created design palettes, each with a distinct, modern aesthetic.



Keybridge

VAUXHALL, SW8

VISIT OUR TWO-BED SHOW APARTMENT & MARKETING SUITE TODAY:
80 SOUTH LAMBETH ROAD, LONDON SW8 1RG

+44 (0)20 7205 4273 | SALES@KEYBRIDGELONDON.COM | KEYBRIDGELONDON.COM

Developed by

London homes, the Mount Anvil way

FABRICA

A JOINT VENTURE BETWEEN FABRICA BY AZDOMINION AND MOUNT ANVIL ON BEHALF OF KEYBRIDGE HOUSE LLP

2 Brunswick House B4



This heritage restaurant sits within a magnificent old Georgian mansion. Sitting across from the Tate Britain on the Thames, Brunswick House has become a London landmark, serving up gin infused aperitifs and a hearty menu.
30 Wandsworth Road. T: 020 7394 2100

3 Casa Madeira B3



Incorporating a tapas-style menu filled with traditional omelettes and Portuguese meat, visitors are guaranteed to feast into the night at this restaurant under the arches. Live music, Portuguese wine and caipirinhas abound.
46A Albert Embankment. T: 020 7820 1117

4 Chino Latino B3



This bright and modern bar successfully weaves Chinese and Japanese-inspired dishes, such as the spicy miso or freshly caught sashimi, with Latin-flavoured cocktails including the mezcacita or cachaça.
18 Albert Embankment. T: 020 7769 2500

5 Counter B4



Deco meets disco at this eclectic all-day bar and brasserie in Vauxhall. Incorporating vintage glamour with modern charm, this establishment serves New York-style cuisine, boasting a carefully curated French and American wine list.
Arch 50 South Lambeth Road. T: 020 3693 9600

6 Harar Restaurant B4



Bringing colourful cultures to the heart of London, this traditional restaurant is distinctive in its mix of Ethiopian, Eritrean and Thai foods. Embrace the festive spirit on Sundays where a ceremony is held to celebrate the coffee plant.
49 South Lambeth Road. T: 020 7735 8915

7 Mumbai Delight B4



With an appreciation for the city of Mumbai's food revolution, this establishment is a low-lit, ambient space. Skipping artificial flavours in favour of natural ingredients, the dishes – including tandooris and tikka masalas – are authentically Indian.
51A South Lambeth Road. T: 020 7091 0043

8 Pharmacy 2 C2



Located within Newport Street Gallery, this restaurant is a creative space inspired by the pharmaceutical industry. Collaborators Damien Hirst and Mark Hix bring fresh British and European-inspired food to the table.
Newport Street. T: 020 3141 9333

9 Pico Bar & Grill B3



This contemporary bar on Albert Embankment transports you to Portugal with its enticing food and drink menu. Mouthwatering tapas and paella are served in a European-style bar with outside seating.
74 Albert Embankment. T: 020 7820 1282

10 Tea House Theatre B3



Based in a 19th century Victorian public house on the outskirts of Vauxhall gardens, this bright café transforms into a charming theatre at night. Channelling a proper English vibe, the café has a variety of loose-leaf teas and homemade jams.
139 Vauxhall Walk. T: 020 7207 4585

11 Beefeater Gin Distillery C4



Located in Kennington, this distillery handcrafts the iconic London Dry Gin, a recipe that has remained unchanged since the 1800s. Visitors get a glimpse of how the spirit is made, with a chance to touch and taste the botanicals.
20 Montford Place. T: 020 7587 0034

12 The Brown Derby C5



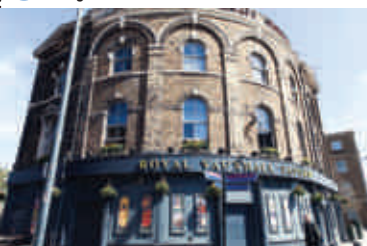
Taking over from a run-down pub, this stylish and vintage-themed watering hole is filled with real ale. The décor and ambience recalls an old style saloon bar, with live music and hearty roasts on a Sunday.
336 Kennington Park Road. T: 020 7735 5122

13 Cable Café & Bar C5



Taking its name from old cable cars that used to run past its door, this café has a jazzy 1950s vibe. Serving coffee and fresh scones by the day, the venue turns into an ambient bar at night.
8 Brixton Road. T: 020 8617 9629

14 Royal Vauxhall Tavern B4



Quirky and mesmerising, this famous venue is intertwined within the halls of a former Victorian music hall. Now a gay stalwart, the tavern hosts weekly club nights including bingo and cabaret drag acts.
372 Kennington Lane. T: 020 7820 1222

15 The Black Dog B3



This charming pub is imbued with a traditional atmosphere. Featuring a beer garden, it's also a café and restaurant, serving up satisfying and fresh dishes such as prawn cocktails, scotch eggs, homemade granola and fresh tarts.
112 Vauxhall Walk. T: 020 7735 4440

16 The Fentiman Arms C5



Incorporating cushion-strewn lounge areas, rows of bookcases, creative lighting and rustic wooden tables, this is a pub like no other. Enjoy a cold beer in the sun-soaked beer garden, or cosy up inside by the crackling log fire.
64 Fentiman Road. T: 020 7793 9796

17 The Riverside B4



Boasting amazing views along the River Thames, this bar sits in the modern area of St George Wharf. Offering an extensive lager list, the restaurant features British classics such as fish and chips and steak pie.
Hamilton House, 5 St George's Wharf. T: 020 7735 8129

18 Vauxhall City Farm B3



A little slice of the countryside in the heart of one of the world's largest cities, this urban charity farm provides education, recreation and therapy in the form of workshops and gardening projects.
165 Tyers Street. T: 020 7582 4204

19 Above the Stag Theatre B4



Sitting covertly under a renovated arch in Vauxhall, this theatre has a distinct twist. With a focus on fringe, the theatre incorporates LGBT-themed productions, writing and musicals in an intimate and cosy setting.
17 Miles Street.

20 Beaconsfield Studio C2



This 1990s studio provides a much needed space for creative enquiry through contemporary art and artists. Exhibitions are expressive and thought provoking, while a vegetarian café provides sustenance for visitors.
22 Newport Street. T: 020 7582 6465

21 Gasworks C4



Channelling London's young arts scene, this visual art organisation comprises a gallery and artist studios. Focusing on themed collections, the venue runs six exhibitions a year and an international artist residency program.
155 Vauxhall Street. T: 020 7587 5202

22 Newport Street Gallery C2



Presenting work drawn from Damien Hirst's art collection, this gallery is housed within a renovated Victorian painting studio. With more than 3000 works from his collection, the gallery also holds solo and group exhibitions.
Newport Street. T: 020 3141 9320

23 Michael's Shoe Repairs B4



Established in 1962, this family-run business with an established international reputation is an important trader for Vauxhall residents. This charming shop specialises in traditional shoe repairs, key cutting, trophies and engraving.
45 South Lambeth Road. T: 020 7735 2386

24 Vauxhall Climbing B4



This indoor climbing wall incorporates short but complex challenges to test strength and stamina. With a café in a glazed archway, here climbing enthusiasts have all they need.
Arch 46-47A, South Lambeth Road. T: 020 7160 0248

25 Vauxhall Park Pleasure Gardens & Café B3



Dating back to the 17th century, this verdant park was once only accessible by boat across the Thames. This historical green space plays host to several annual events such as St George's Day Festival, and the Summer Festival.
Tyers Street.

26 New Covent Garden Market A5



New Covent Garden Market is London's finest fresh food and flower market. It dates back centuries and has been based in Nine Elms since 1974. It is a wholesale market serving trade customers.
New Covent Garden Market. T: 020 7720 2211

Keybridge
VAUXHALL, SW8

THE HEIGHT
OF LUXURY

GYM
SPA, SAUNA AND
STEAM ROOM
15M POOL
24-HOUR
CONCIERGE
KEYBRIDGE CLUB
LOUNGE
AN ACRE OF
LANDSCAPED
GREEN SPACE
CHOICE OF THREE
COLOUR PALETTES

+44 (0)20 7205 4273
SALES@KEYBRIDGELONDON.COM
KEYBRIDGELONDON.COM